



Cedar Rapids, Iowa telephone : area code 319, 365-8411 cable : COLINRAD

AMATEUR SERVICE AGENCY BULLETIN NO. 1010

DATE: November 16, 1962
Page 1 of 2

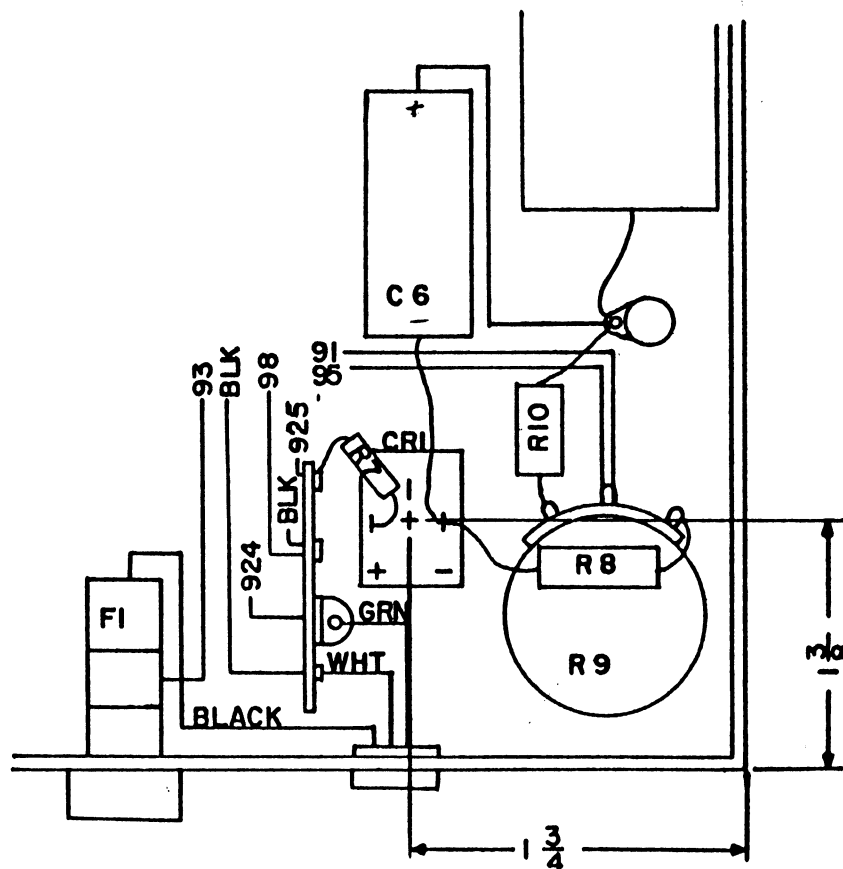
EQUIPMENT TYPE: Power Supply 516F-2

SUBJECT: A. Bias Diode Change and Capacitor Change
B. Bias Voltage Range Increase
C. Check Wiring of Fuse F1

A. Bias Diode and Capacitor Change

A high voltage transient in the bias line of some 516F-2's has been destroying the silicon diode (used in some models) which causes the filter capacitor to explode. If a failure occurs, the following modification is recommended (see sketch).

NOTE: In some cases a hole may have to be drilled in the chassis to facilitate mounting of the selenium diode.



<u>ITEM</u>	<u>DESCRIPTION</u>	<u>PART NUMBER</u>
CR1	Rectifier, Metallic: Selenium	353-0153-00
R7	Resistor, Composition: 100 ohms \pm 10%, $\frac{1}{2}$ w	745-1310-00
R8	Resistor, Composition: 4700 ohms \pm 10%, 2w	745-5680-00
R9	Resistor, Variable, Wirewound: 2500 ohms \pm 10%, 2w	750-0522-00
R10	Resistor, Composition: 5600 ohms \pm 10%, 2w	745-5684-00
C6	Capacitor, Electrolytic: 10uf, -15% + 50%, 250v DCW	183-1046-00

B. Bias Voltage Range Increase

In some cases the bias range of the 516F-2 may not be sufficient to give the desired idle current in a 32S or KWM-2. The following modification is then recommended. Make the changes of Part A with the following modification:

<u>CHANGE</u>	<u>TO</u>	<u>PART NUMBER</u>
R8, 4700 ohms, 2w	R8, 3300 ohms, 2w	745-5673-00
R9, 2500 ohms, 2w pot	R9, 5000 ohms, 2w pot	376-2376-00

C. Check Wiring of Fuse F1

In some power supplies, the wires to the fuse holder XF1 were transposed. This makes the rim of the fuse hot with respect to ground. Check to see if the wires connected to fuse holder are in the same locations as shown in the sketch of Part A.